

# Hate Crime



By Christopher Langman



Warwickshire  
**POLICE**



West Mercia  
**POLICE**



HATE CRIME is ...

a crime against someone (known as a “Victim”) because of their ...



Race (the country they are from or the colour of their skin)



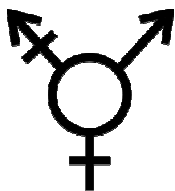
Religion



Sexuality



Disability

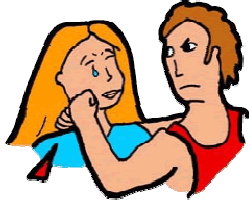


Transgender



or because they look different

Any type of crime can be a hate crime. Hate crime may include ...



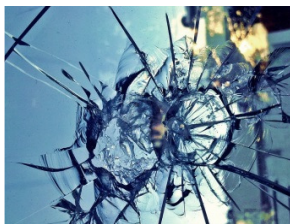
Hitting



Shouting



Name calling



Damaging property



Hurting

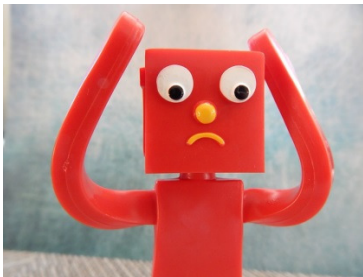
The impact on you may be ...



Feeling alone



Blaming yourself



Feeling sad



Feeling scared



Feeling angry

## How can you report hate crime?



Police



Support worker or carer



Family or friend



Teacher



A support agency such as  
Crimestoppers or Victim  
Support



A Safe Place member of  
staff

What information may be helpful?



What has happened



Are you hurt



Who was there



When it happened



Where it happened

## Contact details

|                                                           |                                                                              |
|-----------------------------------------------------------|------------------------------------------------------------------------------|
| Police                                                    | 999 (Emergency)<br>101 (Non-emergency)<br>or visit your local Police Station |
| True Vision<br>(online reporting)                         | <a href="http://www.report-it.org.uk">www.report-it.org.uk</a>               |
| Crimestoppers                                             | 0800 555 111                                                                 |
| Victim Support                                            | 0845 30 30 900                                                               |
| The Stop Hate Line                                        | 0800 138 1625                                                                |
| Learning Disability<br>Partnership Board<br>(Safe Places) | 01926 74 24 14                                                               |